



Recent economic developments in investment and capital flows

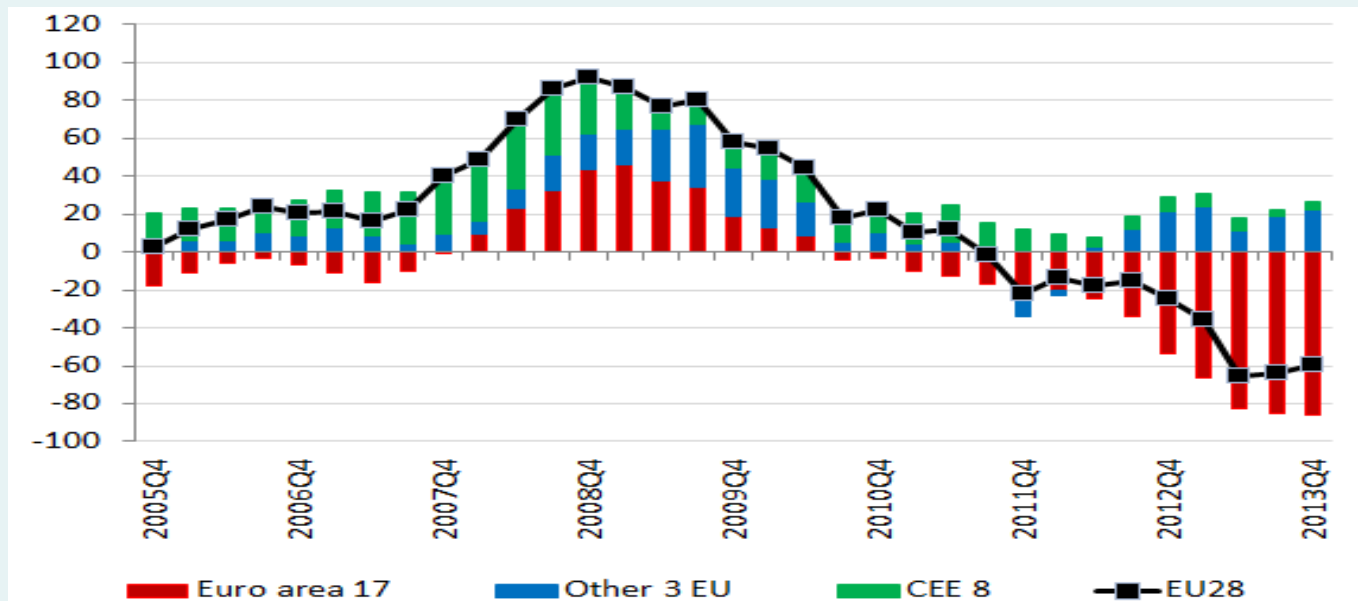
Stefaan De Rynck

**DG Financial Services,
Financial Stability, and
Capital Markets Union,**

**Head of Unit B1
Free Movement of Capital
and Enforcement of EU Law**

In spite of less turbulent financial markets in 2013-14, capital was still flowing out of the EU in net terms

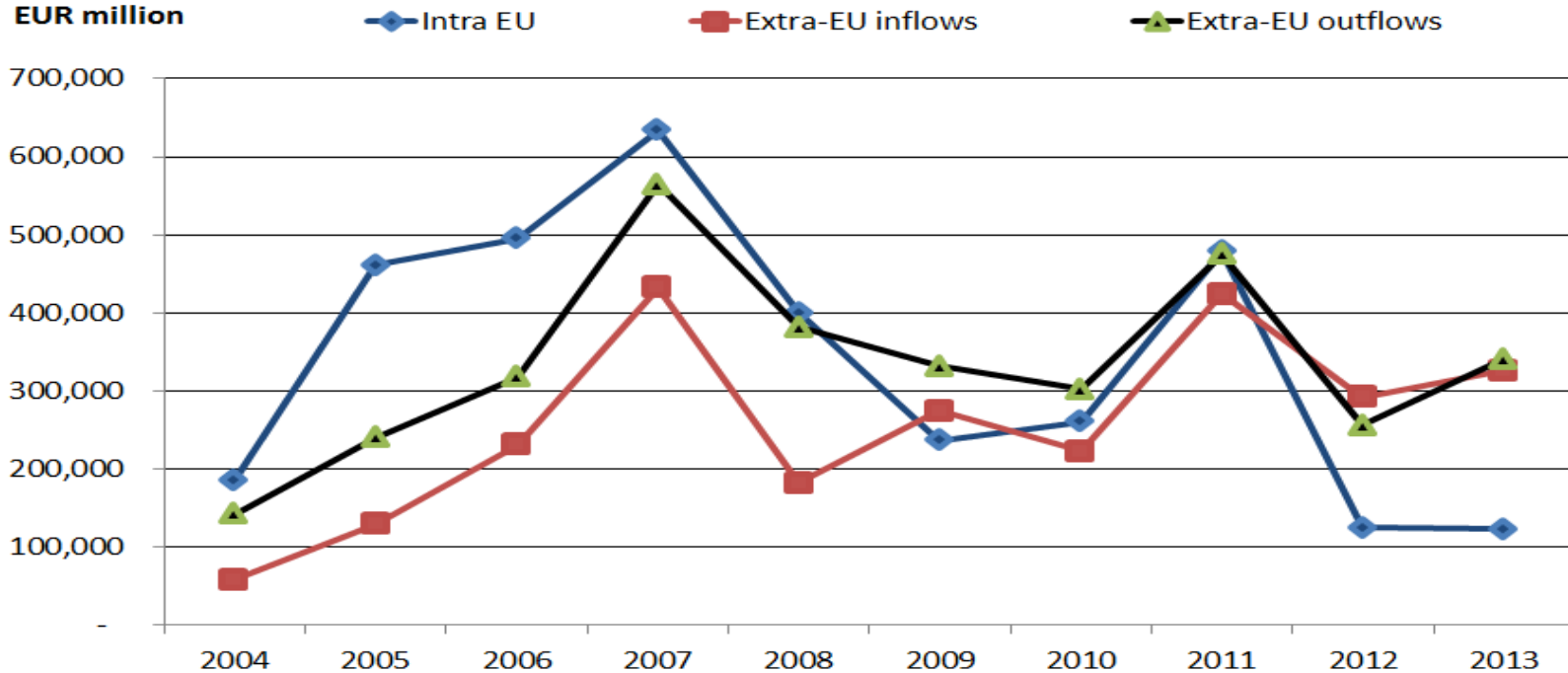
EU28



Note: A positive value indicates net capital inflows into the country/country group. We report four-quarter moving averages.

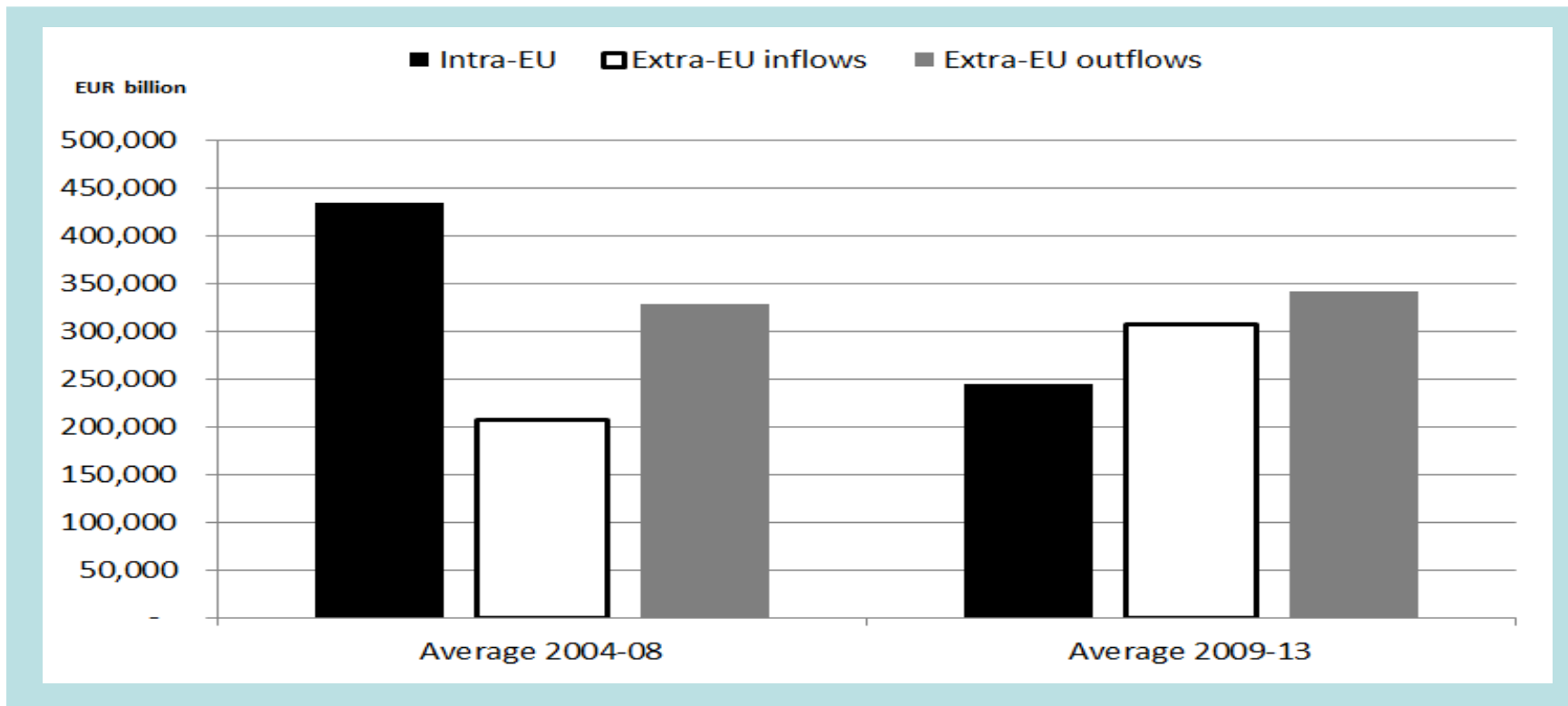
Intra-EU cross-border FDI flows declined sharply in 2011 and continued to plummet in 2013

EUR million



Note: 2013 data are preliminary.

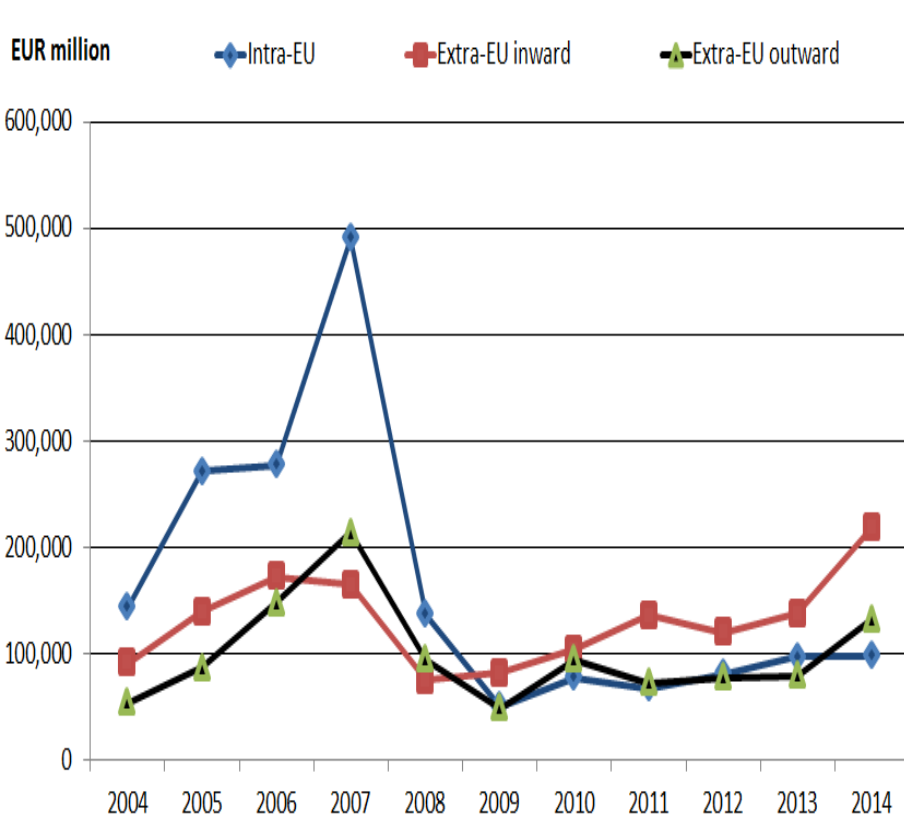
Average intra-EU FDI inflows were significantly lower in 2009-13 than before the crisis in 2004-08



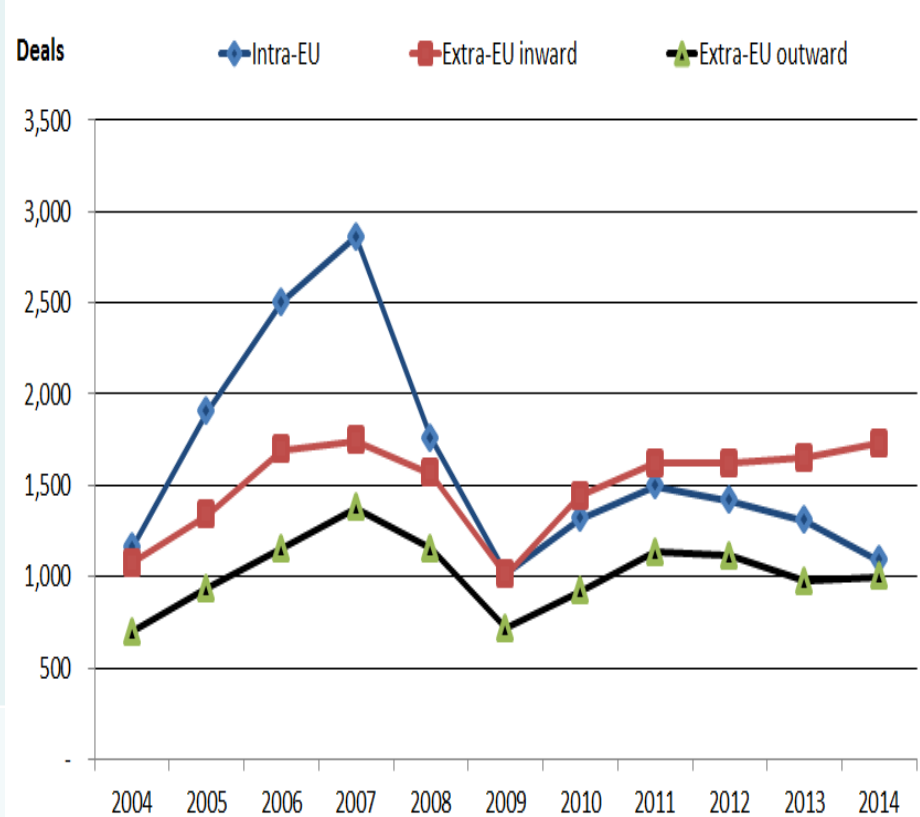
Note: Intra-EU direct investment flows are based on inflows. 2013 data are preliminary.

Intra-EU Mergers and Acquisitions collapsed as well

Number of transactions



Value of transactions



Source: Commission services' calculations based on Standard and Poor's Capital IQ database.